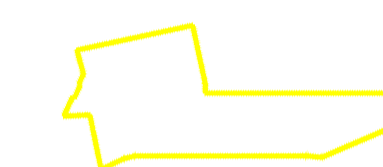


KEY

NAME AND TITLE SIGNATURE

DEKHEILA CONTAINER TERMINAL  
KEY LOCATION PLAN



NOTE

1. ALL DIMENSIONS ARE IN MILLIMETRES UNLESS OTHERWISE STATED.
2. CONCRETE IS GRADE 40/25 MKR UNLESS OTHERWISE STATED.
3. BLINDING IS TO BE 100mm THICK SHOWN CAD PRESCRIBED MKR.
4. COVER TO ALL FACES SHALL BE 75mm.
5. CONCRETE FINISH TO FORMED AND UNFORMED SURFACE SHALL BE TYPE B & TYPE D RESPECTIVELY.
6. REINFORCEMENT SHALL BE GRADE 460/A25 IN ACCORDANCE WITH BS4449.
7. 156/226/16-1-1812
- 156 NUMBER OF SETS
- 226 NUMBER OF BARS
- 16 DIAMETER
- 1 BAR MARK
- 1812 TOTAL BAR LENGTH
8. MINIMUM LAP LENGTH: BAR DIAMETER 32mm-42X DIAMETER BAR DIAMETER 32mm-40X DIAMETER
9. IMMEDIATELY AFTER CONSTRUCTION AND FINISHING CONCRETE SHALL BE CURED CONTINUOUSLY FOR A MINIMUM PERIOD OF 9 DAYS. CURING SHALL BE BY METHOD APPROVED IN ADVANCE BY THE ENGINEER.
10. FOR CONTAINER BASE WITH REFER TO GENERAL STACKING DRAWING NO. 0429/TM-40-0101.
11. ALL STEEL ANGLES SHALL BE HOT DIP GALVANISED IN ACCORDANCE WITH BS729.

Rev. Desc. BY Date Issued

PROJECT  
DEKHEILA CONTAINER TERMINAL DEVELOPMENT

OWNER  
Alexandria International Container Terminals Co. Hutchison Port Holdings Limited

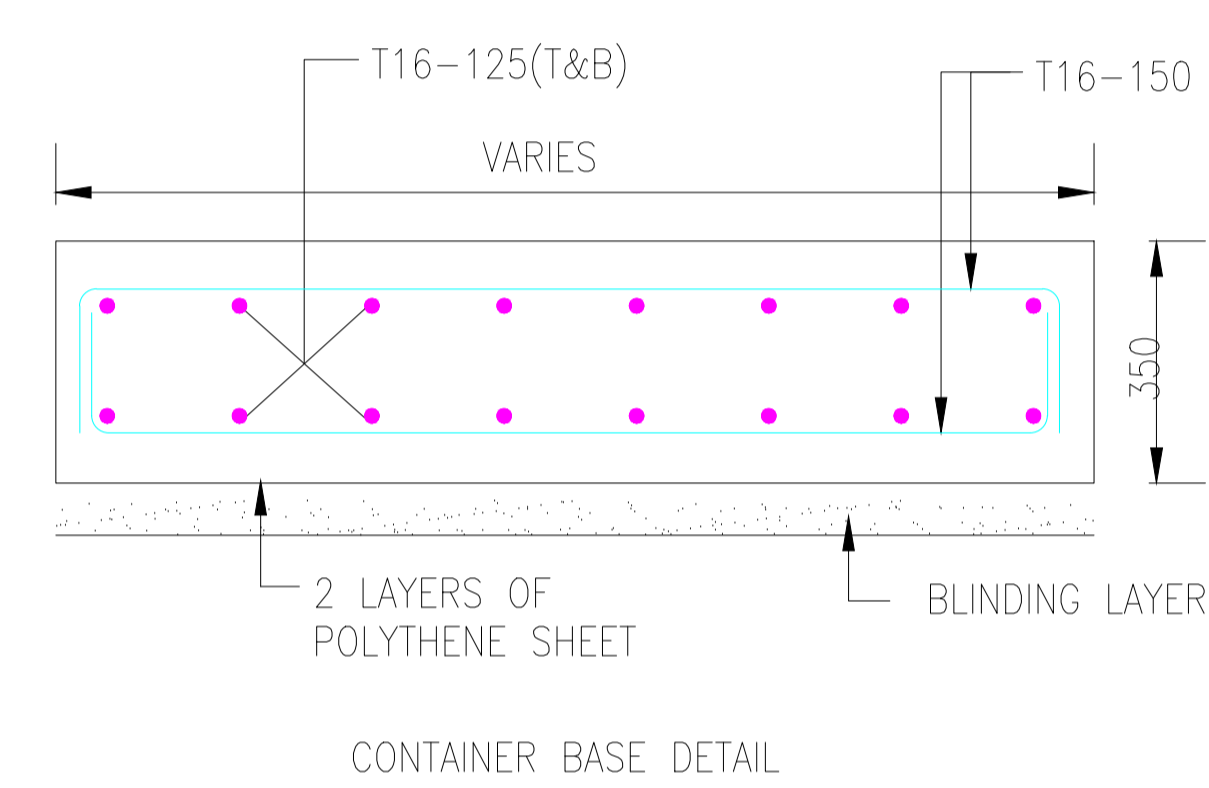
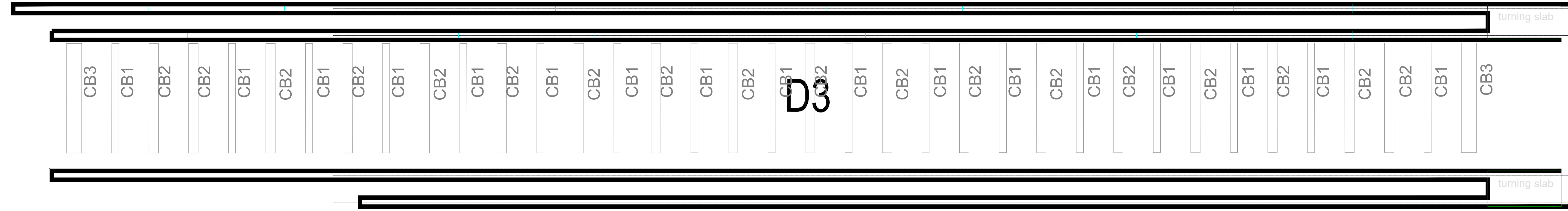
CONSULTANTS:

MAIN CONTRACTOR:

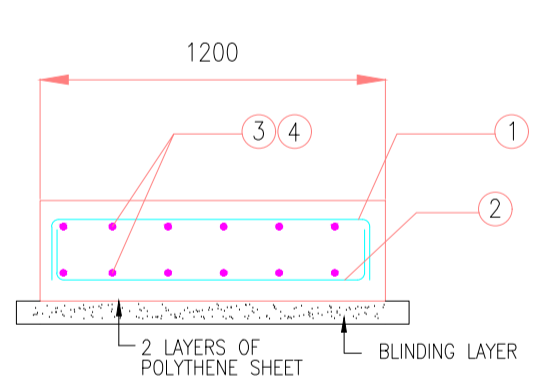
DIS: CIVIL ELEMENT: CONTAINER BASE  
SCALE: SHEET NO: REINFORCEMENT DETAILS

DRAWING TITLE  
CONTAINER BASE SLAB SHEET

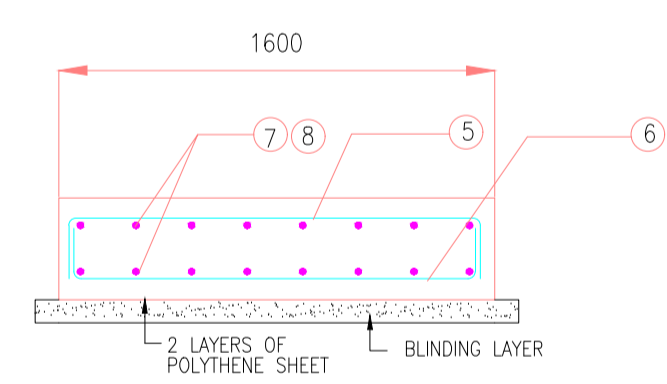
APP. DESIGNED DRAWN VERIFIED DATE  
DRAWING No. REV. NO. SIZE:  
0 A1



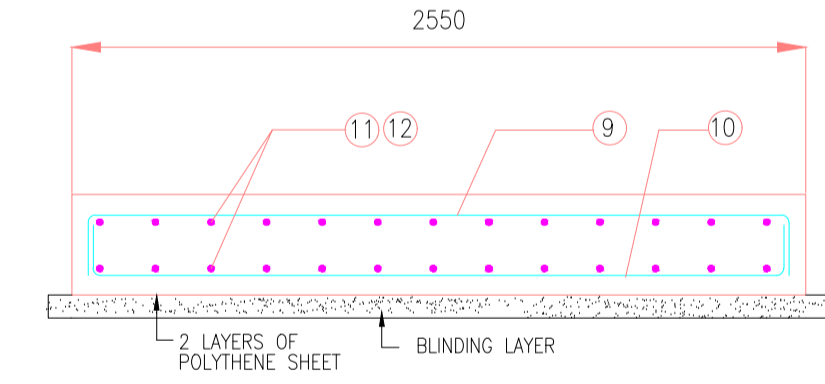
CONTAINER BASE DETAIL



CONTAINER BASE CB1



CONTAINER BASE CB2



CONTAINER BASE CB3

